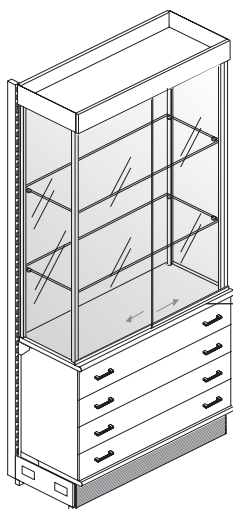


SPACER

COMPOSIZIONI H248 COMPOSITIONS H248



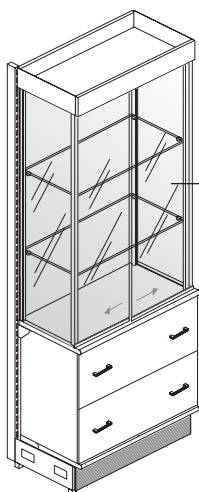
ante scorrevoli
sliding doors

L 100

descrizione	description	codice	code	qt.	pg.
Montante murale H.248 P.7 con base P.36	Wall vertical frame H.248 D.7 with base D.36	CEV0022		1	2.3
Schienale H.233 L.100 nobilitato	Coated back H.233 L.100	CEN1510		1	2.53
Vetr."Spacer" ante scor.H.148 L.100 P.40	"Spacer" glass display case w/sliding doors H.148 L.100 D.40	CEPM842		1	2.143
Veletta "Spacer" L.100 H.10 nobilitata	Coated "Spacer" veil L.100 H.10	CEN2642		1	2.135
Mobile base post forming c/4 cas. Nob. 100*40	Postforming base unit w/4 coated drawers 100*40	CEPN022		1	2.109

TOT

EP0200



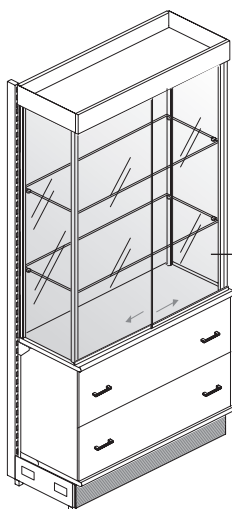
ante scorrevoli
sliding doors

L 75

descrizione	description	codice	code	qt.	pg.
Montante murale H.248 P.7 con base P.36	Wall vertical frame H.248 D.7 with base D.36	CEV0022		1	2.3
Schienale H.233 L. 75 nobilitato	Coated back H.233 L.75	CEN1508		1	2.53
Vetr."Spacer" ante scor.H.148 L. 75 P.40	"Spacer" glass display case w/sliding doors H.148 L.75 D.40	CEPM840		1	2.143
Veletta "Spacer" L. 75 H.10 nobilitata	Coated "Spacer" veil L.75 H.10	CEN2640		1	2.135
Mobile base post forming c/2 cas. Nob. 75*40	Postforming base unit w/2 coated drawers 75*40	CEPN040		1	2.110

TOT

EP0202



ante scorrevoli
sliding doors

L 100

descrizione	description	codice	code	qt.	pg.
Montante murale H.248 P.7 con base P.36	Wall vertical frame H.248 D.7 with base D.36	CEV0022		1	2.3
Schienale H.233 L.100 nobilitato	Coated back H.233 L.100	CEN1510		1	2.53
Vetr."Spacer" ante scor.H.148 L.100 P.40	"Spacer" glass display case w/sliding doors H.148 L.100 D.40	CEPM842		1	2.143
Veletta "Spacer" L.100 H.10 nobilitata	Coated "Spacer" veil L.100 H.10	CEN2642		1	2.135
Mobile base post forming c/2 cas. Nob. 100*40	Postforming base unit w/2 coated drawers 100*40	CEPN042		1	2.110

TOT

EP0204

note note

Introdurre i sistemi di fissaggio a parete pag.2.5 o pag.3.2 e 3.3
To insert the wall fixing systems pag.2.5 - pag.3.2 and 3.3